

# See Mountain House for yourself.

Top schools. Tree-lined sidewalks. Parks full of personality.

Explore our friendly neighborhoods and beautifully appointed model homes, and experience what makes Mountain House a vibrant hometown.

## VILLAGES

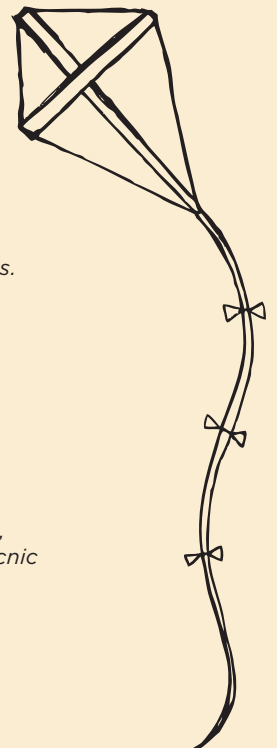
- 1 Questa
- 2 Altamont
- 3 Bethany
- 4 Wicklund
- 5 Hansen
- 6 Cordes

## SCHOOLS

- 1 Sebastian Questa Elementary
- 2 Altamont Elementary
- 3 Bethany Elementary
- 4 Wicklund Elementary
- 5 Peter Hansen Elementary
- 6 Cordes Elementary: *Coming Soon*
- 7 Mountain House High School
- 8 San Joaquin Delta College

## PARKS

- 1 Questa Park  
*5 acres filled with baseball, basketball, bocce ball courts and soccer field.*
- 2 Questa Pocket Park
- 3 Altamont Park  
*Baseball field and open spaces inspire hours of imaginative play.*
- 4 Bethany Park  
*The perfect getaway with playgrounds, open spaces, baseball field, and children's play areas.*
- 5 Bethany Pocket Park
- 6 Wicklund Park  
*Baseball field, picnic area and horseshoe pits.*
- 7 Hansen Park *Future*
- 8 Central Park  
*Where it all happens: special events like the Kite Festival; a game at the ballfields or tennis, basketball and bocce ball; plus, splash pad, picnic area and playground.*
- 9 Mountain House Creek Recreation Area  
*A 3-mile greenbelt featuring a 5k running path—a most beautiful and relaxing way to get your exercise in!*
- 10 Cordes Park *Future*



Hansen Village (Neighborhood C) and Cordes Village (Neighborhood D) are being developed by Mountain House Developers. Inspirato, Wellington, and Oliveto are communities by Richmond American Homes; Richmond American Homes (CalBRE# 01842595), Ashford and Umbria are communities by Shea Homes Limited Partnership with sales by Shea Home Marketing Company (CalBRE# 01378646), both independent members of the Shea family of companies. Sundance is a community by TRI Pointe Communities Inc. (CalBRE #01888935), Tribute II is a community by CalAtlantic Homes: A Lennar Company; CalAtlantic Group, Inc. (CA DRE# 01138346), Savannah II and Alta are communities by Signature Homes Inc. (CalBRE #01885946). Zephyr Ranch is a community by Taylor Morrison Inc. (CalBRE #00968975). All plans and amenities are subject to change at any time without notice. 4/18